

Parts List

ITEM	QTY	PART #	DESCRIPTION
1	2	A02411	BEARING
2	1	A02441A	BASE
3	2	A02465	VALVEBODY, 316ss
4	2	A03461	CAP
5	2	A05401	ECCENTRIC
6	4	A06401A	FOOT
7	1	A06443	BLUE FAN
8	1	A06444	WHITE FAN
9	2	A08403	HEAD, 316ss
10	2	A08461	HOUSING
11	1	A13402	MOTOR
12	2	A14401	COUNTERWEIGHT
13	2	A16407	COVER PLATE
14	2	A16461	PLATE, 316ss
15	2	A18402	TOLERANCE RING
16	2	A18461	CONNECTING ROD
17	2	A19013	SCREW
18	4	A19021	SCREW
19	8	A19309	SCREW
20	4	A19419	SCREW
21	2	A19467	PLATE SCREW, 316ss
22	8	A23402	LOCK WASHER
23	2	*A04461	DIAPHRAGM, TEFLON
24	2	*A07411	GASKET, TEFLON
25	2	*A23461	WASHER

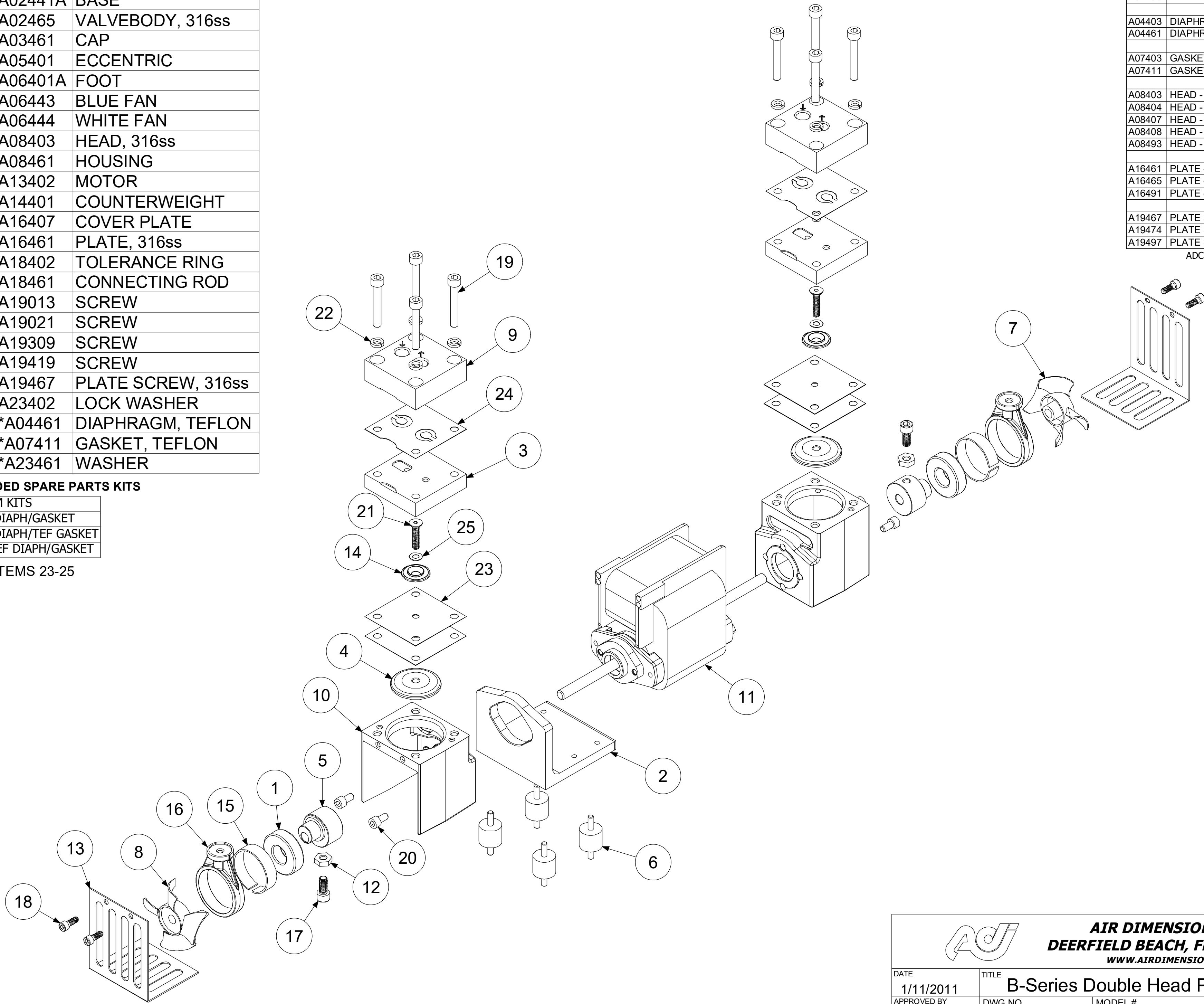
ALTERNATE PARTS LIST	
A02460	VALVEBODY - ALUM TEF CO
A02465	VALVEBODY - 316ss
A02466	VALVEBODY - ALUM
A02469	VALVEBODY - 316ss TEF CO
A02495	VALVEBODY - SILCONERT
A04403	DIAPHRAGM - VITON
A04461	DIAPHRAGM - 2-PLY TEFLON
A07403	GASKET - VITON
A07411	GASKET - TEFLON
A08403	HEAD - 316ss
A08404	HEAD - ALUM
A08407	HEAD - 316ss TEF CO
A08408	HEAD - ALUM TEF CO
A08493	HEAD - SILCONERT
A16461	PLATE - 316ss
A16465	PLATE - 316ss TEF CO
A16491	PLATE - SILCONERT
A19467	PLATE SCREW - 316ss
A19474	PLATE SCREW - 316ss TEF CO
A19497	PLATE SCREW - SILCONERT


ADC-121 06/16/20

*RECOMMENDED SPARE PARTS KITS

DIAPHRAGM KITS	
11403	VITON DIAPH/GASKET
11409	VITON DIAPH/TEF GASKET
11461	2-PLY TEF DIAPH/GASKET

INCLUDES ITEMS 23-25





AIR DIMENSIONS INC.
DEERFIELD BEACH, FL. USA 33442
WWW.AIRDIMENSIONS.COM

DATE 1/11/2011	TITLE B-Series Double Head Pump	
APPROVED BY FDM	DWG NO Bxx2-xx-AC5	MODEL # Bxx2-xx-AC5

SHEET 2 OF 2

06/20 (2128)