

Parts List

| ALTERNATE PARTS LIST | |
|----------------------|-------------------|
| A03019 | HUBBLE CONNECTOR |
| A03045 | POWER CORD - 115V |
| A03046 | POWER CORD - 230V |

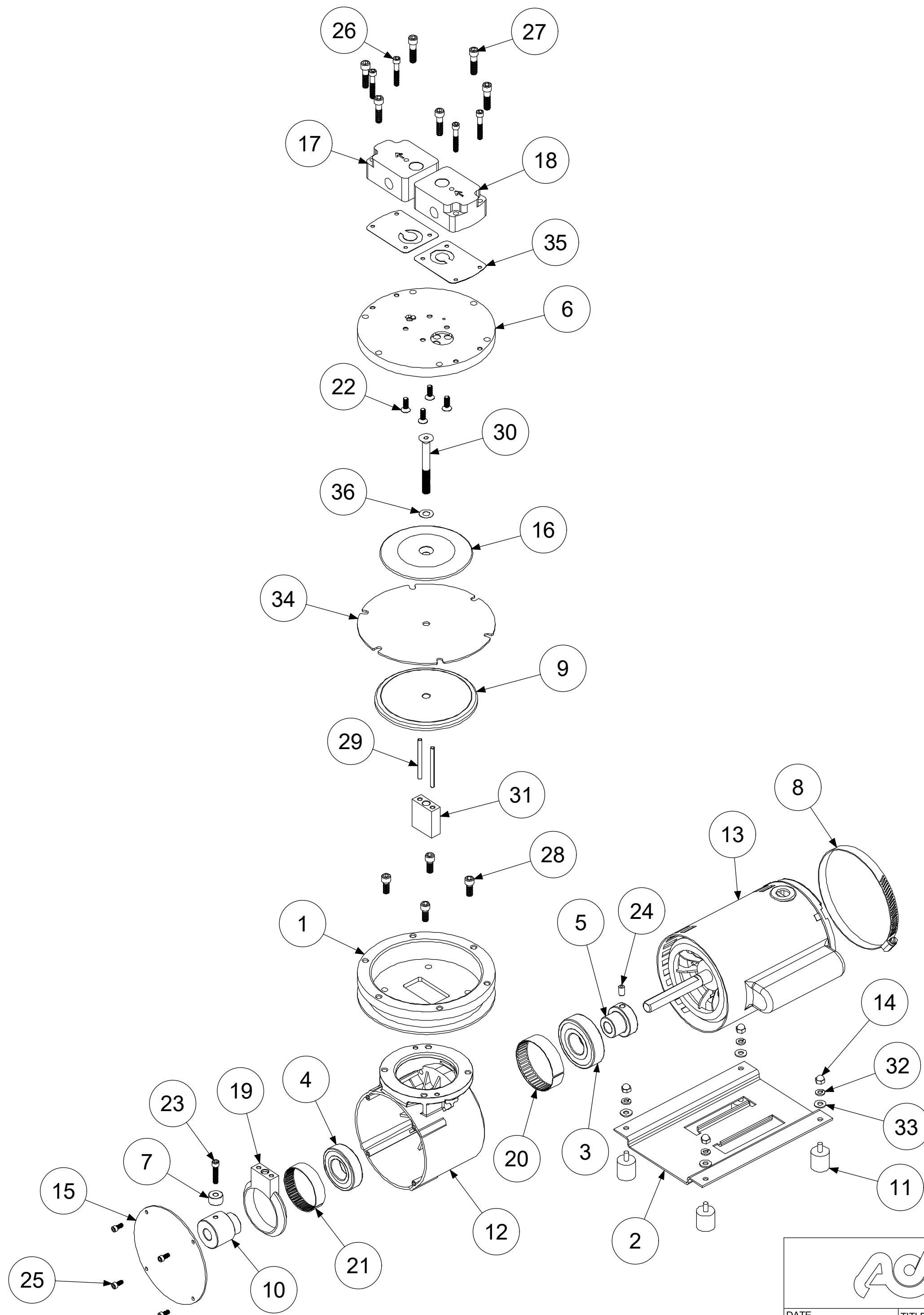
ADC-181 06/25/20

| ITEM | QTY | PART# | DESCRIPTION |
|------|-----|-------------|-----------------|
| 1 | 1 | A01830 | ADAPTOR |
| 2 | 1 | A02001A | BASE |
| 3 | 1 | A02610 | BEARING |
| 4 | 1 | A02611 | BEARING |
| 5 | 1 | A02633 | SHAFT BUSHING |
| 6 | 1 | A02805 | VALVEBODY |
| 7 | 1 | A03002A | COUNTERWEIGHT |
| 8 | 1 | A03003 | CLAMP |
| 9 | 1 | A03801 | CAP |
| 10 | 1 | A05601A-250 | ECCENTRIC |
| 11 | 4 | A06801 | FOOT |
| 12 | 1 | A08602 | HOUSING |
| 13 | 2 | A13603 | *Varies* |
| 14 | 4 | A14001 | CAP NUT |
| 15 | 1 | A16607 | COVER PLATE |
| 16 | 1 | A16801 | DIAPHRAGM PLATE |
| 17 | 1 | A16810 | EXHAUST PORT |
| 18 | 1 | A16811 | INTAKE PORT |
| 19 | 1 | A18601 | CONROD |
| 20 | 1 | A18602 | TOL. RING |
| 21 | 1 | A18603 | TOL. RING |
| 22 | 4 | A19007 | PLATE SCREW |
| 23 | 1 | A19009A | SCREW |
| 24 | 1 | A19010 | SET SCREW |
| 25 | 4 | A19013 | SCREW |
| 26 | 4 | A19017A | SCREW |
| 27 | 6 | A19604 | HEAD BOLT |
| 28 | 4 | A19605 | HEAD BOLT |
| 29 | 2 | A19654 | ROLL PIN |
| 30 | 1 | A19807A | SCREW |
| 31 | 1 | A19820 | CONROD SPACER |
| 32 | 4 | A23002 | LOCK WASHER |
| 33 | 4 | A23004 | WASHER |
| 34 | 1 | *A04811 | DIAPHRAGM |
| 35 | 2 | *A07801 | GASKET |
| 36 | 1 | *A23801 | WASHER |

***RECOMMENDED SPARE PARTS KIT**

| |
|--------------------|
| DIAPHRAGM KIT |
| 11811 3-PLY TEFLON |

INCLUDES ITEMS 34-36



AIR DIMENSIONS INC.
DEERFIELD BEACH, FL. USA 33442
WWW.AIRDIMENSIONS.COM

| | |
|--------------------|------------------------|
| DATE 4/1/2014 | TITLE E-Series Pump |
| APPROVED BY FDM | DWG NO E251-FP-AC5 |
| | MODEL # E251-FP-AC5 |
| | SHEET 2 OF 2 |

06/21 (2187)

MOTOR DESCRIPTION:
 A13603 1/2HP 115/230V 50/60Hz 1Ph