

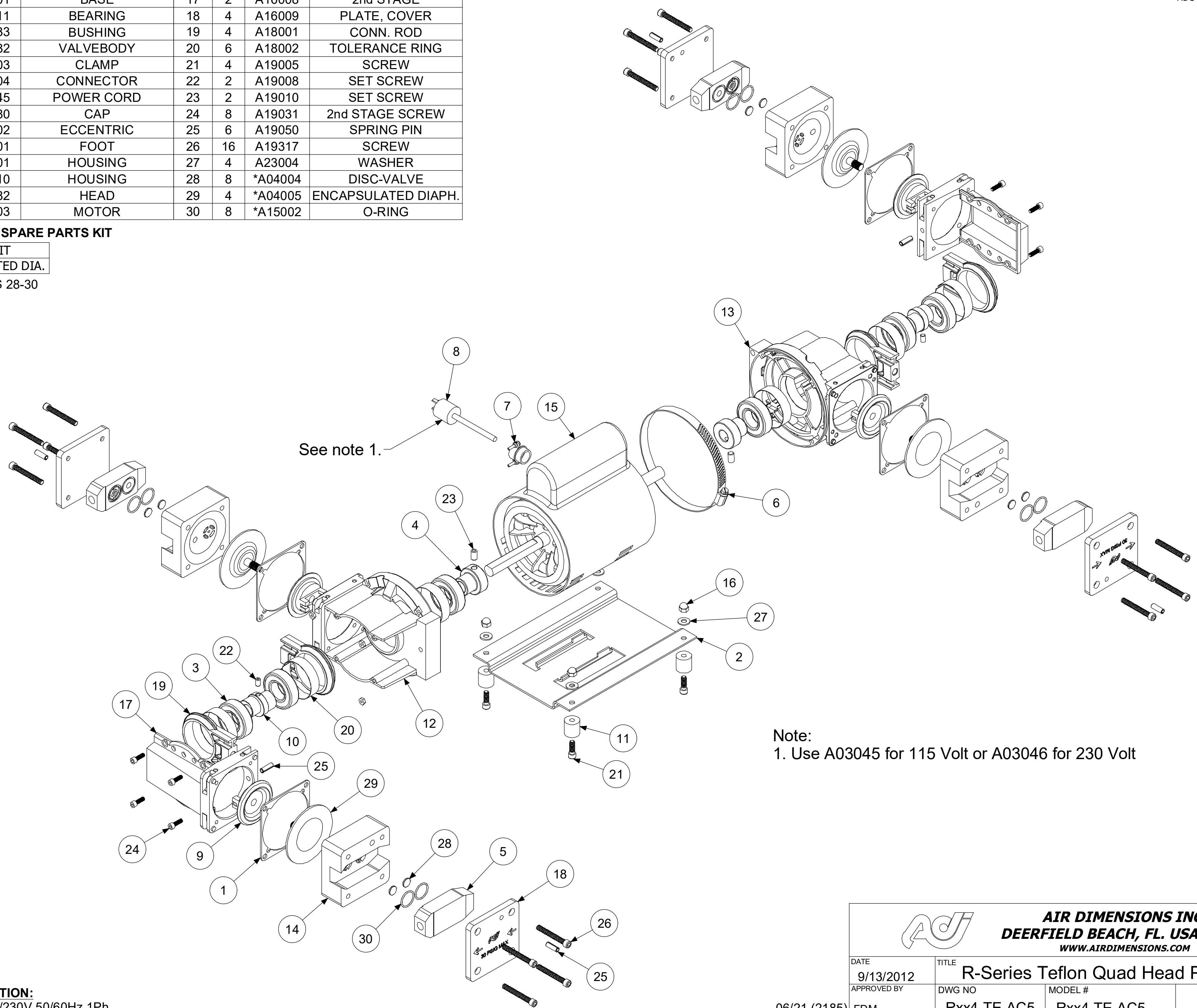
ECCENTRIC	CONNECTING ROD
.275	A18001-275
.250	A18001-250
.060 to .222	A18001

ADC-119 07/23/20

Parts List				Parts List			
ITEM	QTY	PART #	DESCRIPTION	ITEM	QTY	PART #	DESCRIPTION
1	4	A01080	ADAPTOR	16	4	A14001	CAP NUT
2	1	A02001	BASE	17	2	A16008	2nd STAGE
3	6	A02011	BEARING	18	4	A16009	PLATE, COVER
4	2	A02033	BUSHING	19	4	A18001	CONN. ROD
5	4	A02082	VALVEBODY	20	6	A18002	TOLERANCE RING
6	1	A03003	CLAMP	21	4	A19005	SCREW
7	1	A03004	CONNECTOR	22	2	A19008	SET SCREW
8	1	A03045	POWER CORD	23	2	A19010	SET SCREW
9	4	A03080	CAP	24	8	A19031	2nd STAGE SCREW
10	2	A05002	ECCENTRIC	25	6	A19050	SPRING PIN
11	4	A06001	FOOT	26	16	A19317	SCREW
12	1	A08001	HOUSING	27	4	A23004	WASHER
13	1	A08010	HOUSING	28	8	*A04004	DISC-VALVE
14	4	A08082	HEAD	29	4	*A04005	ENCAPSULATED DIAPH.
15	1	A13003	MOTOR	30	8	*A15002	O-RING

**\*RECOMMENDED SPARE PARTS KIT**

DIAPHRAGM KIT  
 11018 ENCAPSULATED DIA.  
 INCLUDES ITEMS 28-30



Note:  
 1. Use A03045 for 115 Volt or A03046 for 230 Volt

**MOTOR DESCRIPTION:**  
 A13003 1/3HP 115/230V 50/60Hz 1Ph

		<b>AIR DIMENSIONS INC.</b> DEERFIELD BEACH, FL. USA 33442 WWW.AIRDIMENSIONS.COM	
DATE	9/13/2012	TITLE	R-Series Teflon Quad Head Pump
APPROVED BY	FDM	DWG NO	Rxx4-TE-AC5
		MODEL #	Rxx4-TE-AC5
06/21 (2185)		SHEET 2 OF 2	