

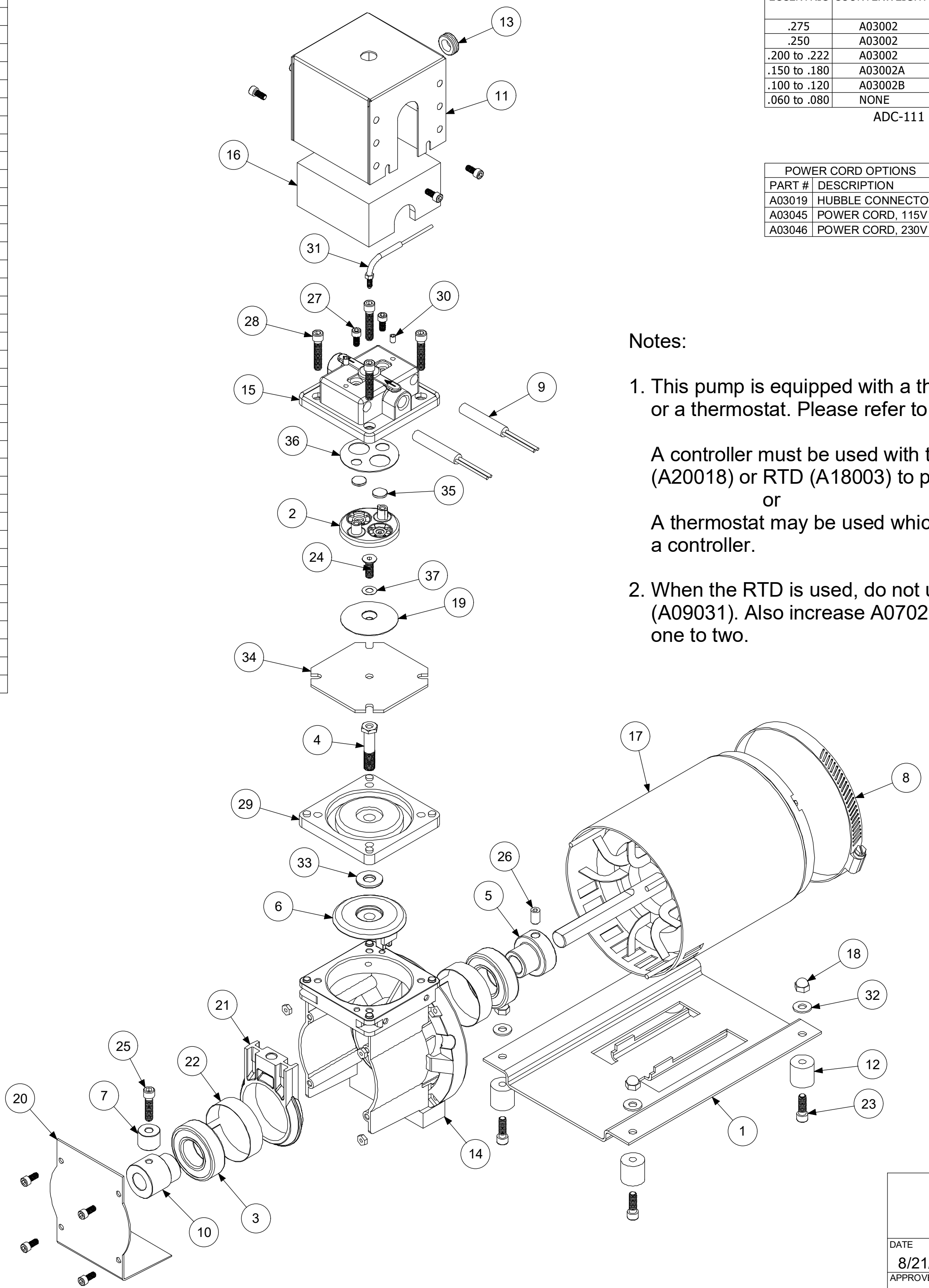
Parts List			
ITEM	QTY	PART #	DESCRIPTION
1	1	A02001	BASE
2	1	A02005	VALVEBODY
3	2	A02011	BEARING
4	1	A02017	ROD BOLT
5	1	A02033	BUSHING
6	1	A03001	CAP
7	1	A03002	COUNTERWEIGHT
8	1	A03003	CLAMP
9	2	A03012	HEATER
10	1	A05001	ECCENTRIC
11	1	A05005	COVER
12	4	A06001	FOOT
13	1	A07020	GROMMET
14	1	A08001	HOUSING
15	1	A08023	HEATED HEAD
16	1	A09031	INSULATION
17	1	A13001	MOTOR
18	4	A14001	CAP NUT
19	1	A16001	PLATE-DIAPH.
20	1	A16007	COVER PLATE
21	1	A18001	CONN. ROD
22	2	A18002	TOLERANCE RING
23	4	A19005	SCREW
24	1	A19007	PLATE SCREW
25	1	A19009	SCREW
26	1	A19010	SET SCREW
27	10	A19013	SCREW
28	4	A19017	SCREW
29	1	A19044	HI-TEMP SPACER
30	2	A19428	SET SCREW
31	1	A20018	THERMOCOUPLE
32	4	A23004	WASHER
33	1	A23044	WASHER
34	1	*A04001	DIAPHRAGM
35	2	*A04004	DISC-VALVE
36	1	*A07001	GASKET
37	1	*A23001	WASHER

**\*RECOMMENDED SPARE PARTS KITS**

DIAPHRAGMS KITS	
11005	TEFLON/EPDM
11007	VITON
11011	3-PLY TEFLON

B INCLUDES PARTS 34-37.

**MOTOR DESCRIPTION:**  
A13001 1/8HP 110-115/220-230V 50/60Hz 1Ph



ECCENTRIC	COUNTERWEIGHT	COUNTERWEIGHT SCREW	CONNECTING ROD
.275	A03002	A19009A	A18001-275
.250	A03002	A19009A	A18001-250
.200 to .222	A03002	A19009	A18001
.150 to .180	A03002A	A19009	A18001
.100 to .120	A03002B	A19009	A18001
.060 to .080	NONE	A19009	A18001

ADC-111 06/09/20

POWER CORD OPTIONS	
PART #	DESCRIPTION
A03019	HUBBLE CONNECTOR
A03045	POWER CORD, 115V
A03046	POWER CORD, 230V

ALTERNATE AND OPTIONAL PARTS	
PART #	DESCRIPTION
A02005	VALVEBODY - 316ss
A02009	VALVEBODY - 316ss TFE CO
A02023	VALVEBODY - HAST C
A02024	VALVEBODY - HAST C TFE CO
A02075	VALVEBODY - ELECTRO POLISH
A02095	VALVEBODY - SILCONERT
A03012	HEATER - 115V 75 WATT
A03014	HEATER - 230V 75 WATT
A04001	DIAPHRAGM - TEFLON/EPDM
A04003	DIAPHRAGM - VITON
A04011	DIAPHRAGM - 3 PLY TEFLON
A04004	DISC-VALVE - CARBON TEFLON
A04007	DISC-VALVE - 416ss
A07001	GASKET - CARBON TEFLON
A07005	GASKET - VITON
A07906	GASKET - EPDM
A08022	HEATED HEAD - HAST C
A08023	HEATED HEAD - 316ss
A08026	HEATED HEAD - HAST C TFE CO
A08027	HEATED HEAD - 316ss TFE CO
A08074	HEATED HEAD - ELECTRO POLISH
A08097	HEATED HEAD - SILCONERT
A16001	PLATE - 316ss
A16005	PLATE - 316ss TFE CO
A16020	PLATE - HAST C
A16021	PLATE - HAST C TFE CO
A16071	PLATE - ELECTRO POLISH
A16091	PLATE - SILCONERT
A19007	PLATE SCREW - 316ss
A19011	PLATE SCREW - 316ss TFE CO
A19015	PLATE SCREW - HAST C
A19020	PLATE SCREW - HAST C TFE CO
A19077	PLATE SCREW - ELECTRO POLISH
A19097	PLATE SCREW - SILCONERT
A20065	THERMOSTAT - OFF 65° C/ ON 55° C
A20100	THERMOSTAT - OFF 100° C/ ON 90° C
A20140	THERMOSTAT - OFF 140° C/ ON 125° C
A20163	THERMOSTAT - OFF 163° C/ ON 143° C
A20200	THERMOSTAT - OFF 200° C/ ON 185° C
A23001	TEFLON WASHER
A23502	TEFZEL WASHER


ADC-118 12/21/20

**Notes:**

1. This pump is equipped with a thermocouple, RTD, or a thermostat. Please refer to the following.

A controller must be used with the thermocouple (A20018) or RTD (A18003) to prevent overheating, or  
A thermostat may be used which does not require a controller.

2. When the RTD is used, do not use insulation (A09031). Also increase A07020 quantity from one to two.



**AIR DIMENSIONS INC.**  
DEERFIELD BEACH, FL. USA 33442  
WWW.AIRDIMENSIONS.COM

DATE 8/21/2013	TITLE R-Series Heated Head Pump
APPROVED BY FDM	DWG NO Rxx1-xx-AC5-M
MODEL # Rxx1-xx-AC5-M	SHEET 2 OF 2