

Parts List				Parts List			
ITEM	QTY	PART #	DESCRIPTION	ITEM	QTY	PART #	DESCRIPTION
1	1	A01603	ADAPTOR PLATE	36	2	*A22002	4-40 SCREW
2	1	A02002	BASE	37	2	*A22601	VALVE
3	1	A02017	ROD BOLT	38	1	*A22605	VALVE STOP
4	4	A02038	BOLT-MOTOR	39	1	*A23001	WASHER
5	1	A02610	BEARING				
6	1	A02611	BEARING				
7	1	A02633	SHAFT BUSHING				
8	1	A03601	CAP				
9	1	A03602	COUNTERWEIGHT				
10	1	A05601A	ECCENTRIC				
11	4	A06001	FOOT				
12	1	A06606	ACCESS PLUG				
13	1	A08602	HOUSING				
14	1	A08603	HEAD				
15	1	A13055	MOTOR				
16	4	A14001	CAP NUT				
17	4	A14009	NUT				
18	1	A16601	DIAPH. PLATE				
19	1	A16607	COVER PLATE				
20	1	A16608	COVER, HEAD				
21	1	A18601	CONROD				
22	1	A18602	TOL. RING				
23	1	A18603	TOL. RING				
24	4	A19005	SCREW				
25	1	A19007	PLATE SCREW				
26	4	A19009A	SCREW				
27	1	A19010	SET SCREW				
28	10	A19013	SCREW				
29	1	A19017	SCREW				
30	4	A19026	SCREW, ADAPTOR				
31	4	A19605	HEAD BOLT				
32	3	A19651	ROLL PIN				
33	4	A23004	WASHER				
34	1	*A04601	DIAPHRAGM				
35	1	*A07601	GASKET				

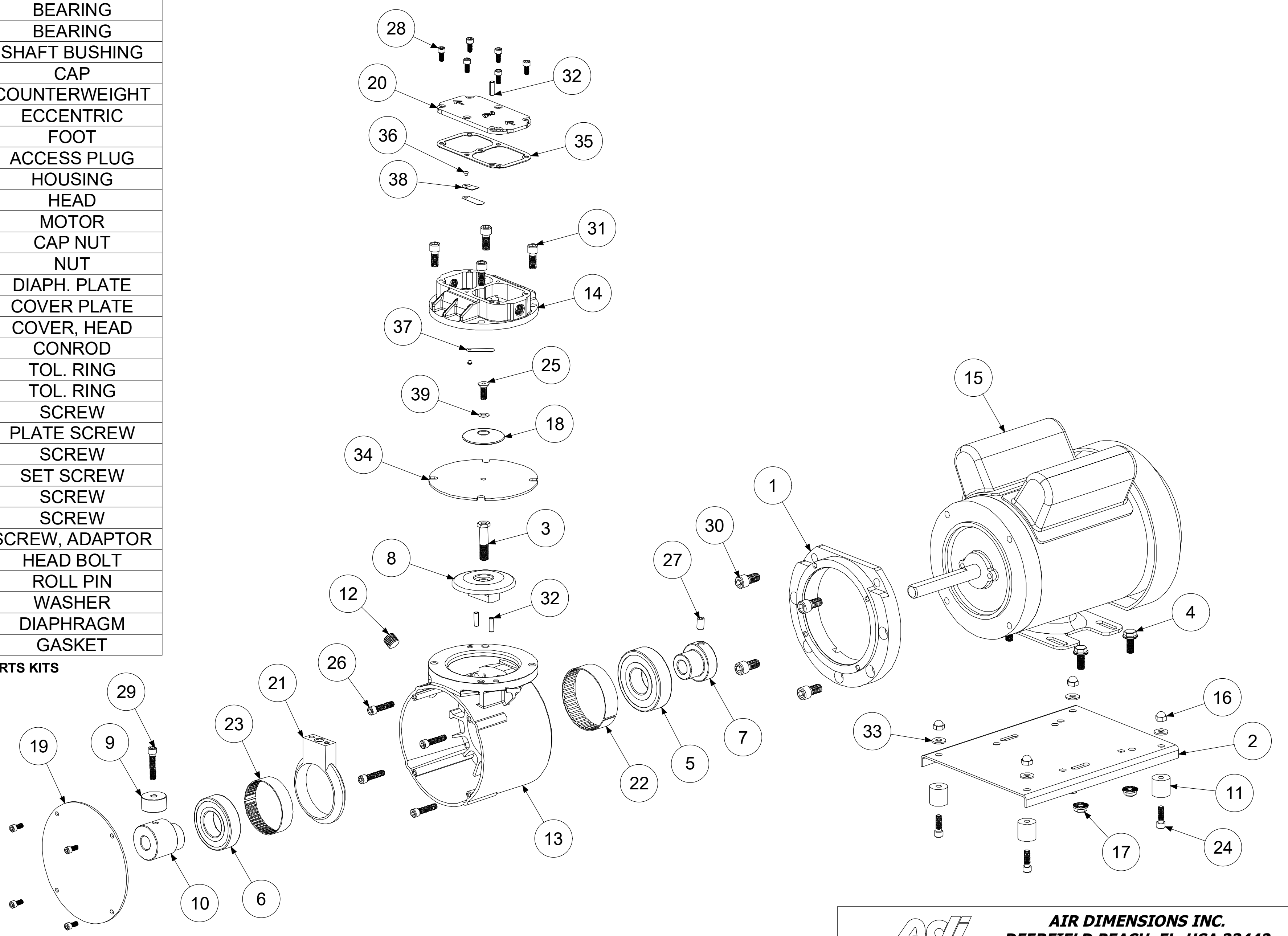
ALTERNATE PARTS LIST	
A03004	CONNECTOR - ROMEX
A03045	CORD - POWER 115V
A03046	CORD - POWER 230V
A04601	DIAPHRAGM - TEFLON/EPDM
A04611	DIAPHRAGM - 3 PLY TEFLON

ADC-200 06/24/21


***RECOMMENDED SPARE PARTS KITS**

DIAPHRAGM KITS	
11605	TEFLON/EPDM
11611	3-PLY TEFLON

INCLUDES ITEMS 34-39



MOTOR DESCRIPTION:
A13055 1/3HP 100-120/200-240V 50/60Hz 1Ph

 AIR DIMENSIONS INC. DEERFIELD BEACH, FL. USA 33442 WWW.AIRDIMENSIONS.COM		DATE		TITLE	
		1/5/2011		H-Series Single Head TEFC Pump	
APPROVED BY		DWG NO		MODEL #	
FDM		H301-Fx-CC5		H301-Fx-CC5	
				SHEET 2 OF 2	

06/21 (2186)