

ECCENTRIC	CONNECTING ROD
.275	A18001-275
.250	A18001-250
.060 to .222	A18001

ADC-119 07/23/20

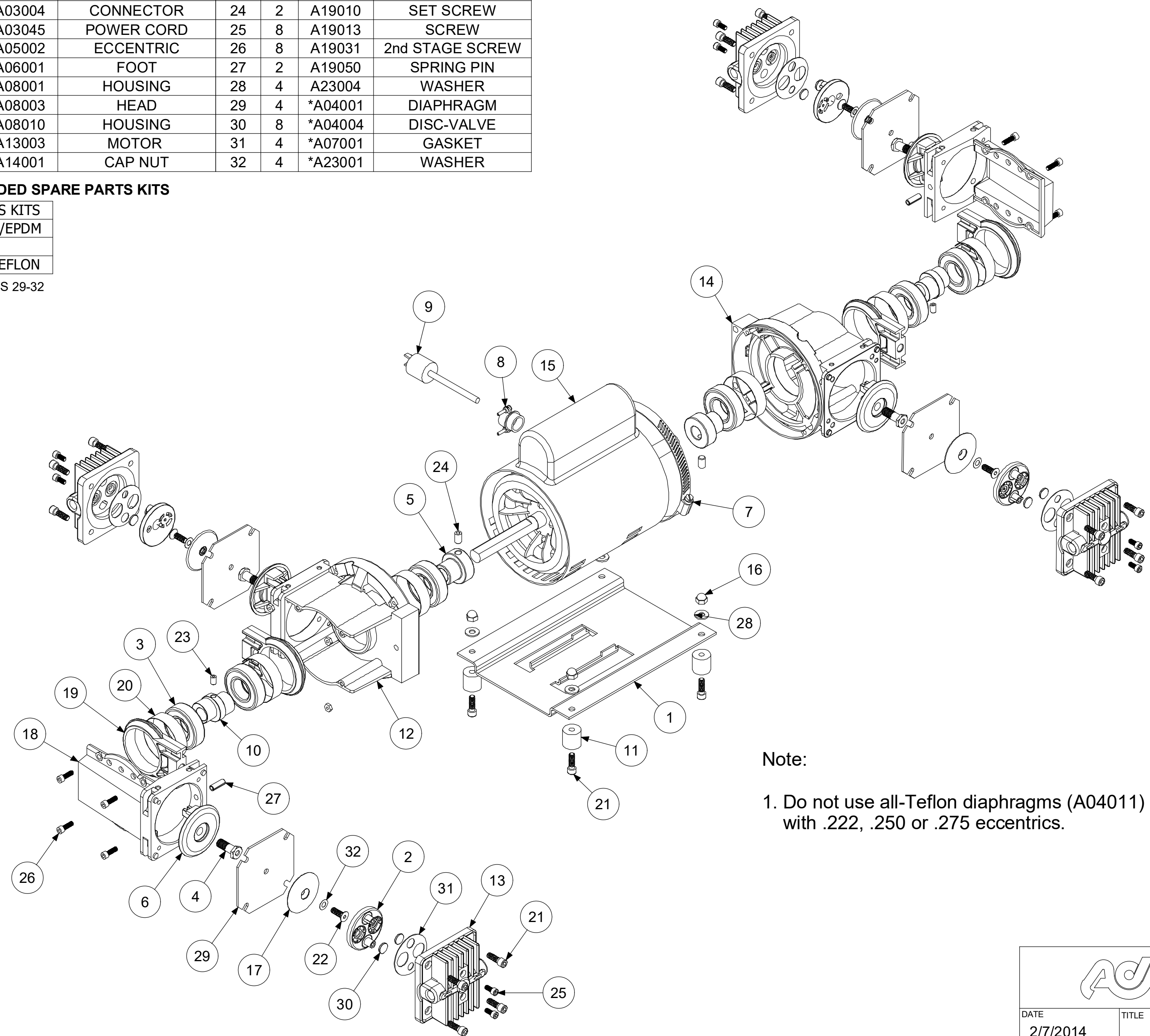
ALTERNATE AND OPTIONAL PARTS	
PART #	DESCRIPTION
A02005	VALVEBODY - 316ss
A02006	VALVEBODY - ALUM
A02009	VALVEBODY - 316ss TFE CO
A02010	VALVEBODY - ALUM TFE CO
A02023	VALVEBODY - HAST C
A02024	VALVEBODY - HAST C TFE CO
A02075	VALVEBODY - ELECTRO POLISH
A02090	VALVEBODY - HAST C SILCONERT
A02095	VALVEBODY - SILCONERT
A02098	VALVEBODY - DURSAN
A03045	CORD - POWER 115V
A03046	CORD - POWER 230V
A04001	DIAPHRAGM - TEFLON/EPDM
A04003	DIAPHRAGM - VITON
A04011	DIAPHRAGM - 3 PLY TEFLON
A04004	DISC-VALVE - CARBON TEFLON
A04007	DISC-VALVE - 416ss
A07001	GASKET - CARBON TEFLON
A07005	GASKET - VITON
A07906	GASKET - EPDM
A08003	HEAD - 316ss
A08004	HEAD - ALUM
A08007	HEAD - 316ss TFE CO
A08008	HEAD - ALUM TFE CO
A08020	HEAD - HAST C
A08021	HEAD - HAST C TFE CO
A08053	HEAD - 316ss RINGED
A08073	HEAD - ELECTRO POLISH
A08090	HEAD - HAST C SILCONERT
A08093	HEAD - SILCONERT
A08094	HEAD - SILCONERT RINGED
A08098	HEAD - DURSAN
A16001	PLATE - 316ss
A16002	PLATE - ALUM
A16005	PLATE - 316ss TFE CO
A16006	PLATE - ALUM TFE CO
A16020	PLATE - HAST C
A16021	PLATE - HAST C TFE CO
A16071	PLATE - ELECTRO POLISH
A16090	PLATE - HAST C SILCONERT
A16091	PLATE - SILCONERT
A16098	PLATE - DURSAN
A19007	PLATE SCREW - 316ss
A19011	PLATE SCREW - 316ss TFE CO
A19015	PLATE SCREW - HAST C
A19020	PLATE SCREW - HAST C TFE CO
A19077	PLATE SCREW - ELECTRO POLISH
A19090	PLATE SCREW - HAST C SILCONERT
A19097	PLATE SCREW - SILCONERT
A19098	PLATE SCREW - DURSAN
A23001	TEFLON WASHER
A23502	TEFZEL WASHER

Parts List				Parts List			
ITEM	QTY	PART #	DESCRIPTION	ITEM	QTY	PART #	DESCRIPTION
1	1	A02001	BASE	17	4	A16001	PLATE-DIAPH.
2	4	A02005	VALVEBODY	18	2	A16008	2nd STAGE
3	6	A02011	BEARING	19	4	A18001	CONN. ROD
4	4	A02014	ROD BOLT	20	6	A18002	TOLERANCE RING
5	2	A02033	BUSHING	21	20	A19005	SCREW
6	4	A03001	CAP	22	4	A19007	PLATE SCREW
7	1	A03003	CLAMP	23	2	A19008	SET SCREW
8	1	A03004	CONNECTOR	24	2	A19010	SET SCREW
9	1	A03045	POWER CORD	25	8	A19013	SCREW
10	2	A05002	ECCENTRIC	26	8	A19031	2nd STAGE SCREW
11	4	A06001	FOOT	27	2	A19050	SPRING PIN
12	1	A08001	HOUSING	28	4	A23004	WASHER
13	4	A08003	HEAD	29	4	*A04001	DIAPHRAGM
14	1	A08010	HOUSING	30	8	*A04004	DISC-VALVE
15	1	A13003	MOTOR	31	4	*A07001	GASKET
16	4	A14001	CAP NUT	32	4	*A23001	WASHER

***RECOMMENDED SPARE PARTS KITS**

DIAPHRAGMS KITS	
11005	TEFLON/EPDM
11007	VITON
11011	3-PLY TEFLON


INCLUDES ITEMS 29-32



Note:

1. Do not use all-Teflon diaphragms (A04011) with .222, .250 or .275 eccentrics.

MOTOR DESCRIPTION:
A13003 1/3HP 115/230V 50/60Hz 1Ph

		AIR DIMENSIONS INC. DEERFIELD BEACH, FL. USA 33442 WWW.AIRDIMENSIONS.COM	
DATE 2/7/2014	TITLE R-Series Quad Head Pump	APPROVED BY FDM	MODEL # Rxx4-xx-AC5
06/21 (2185)		DWG NO Rxx4-xx-AC5	SHEET 2 OF 2